

CHANGE: New UDR4

**STANDARD DEPARTURE CHART - INSTRUMENT (SID) - ICAO**

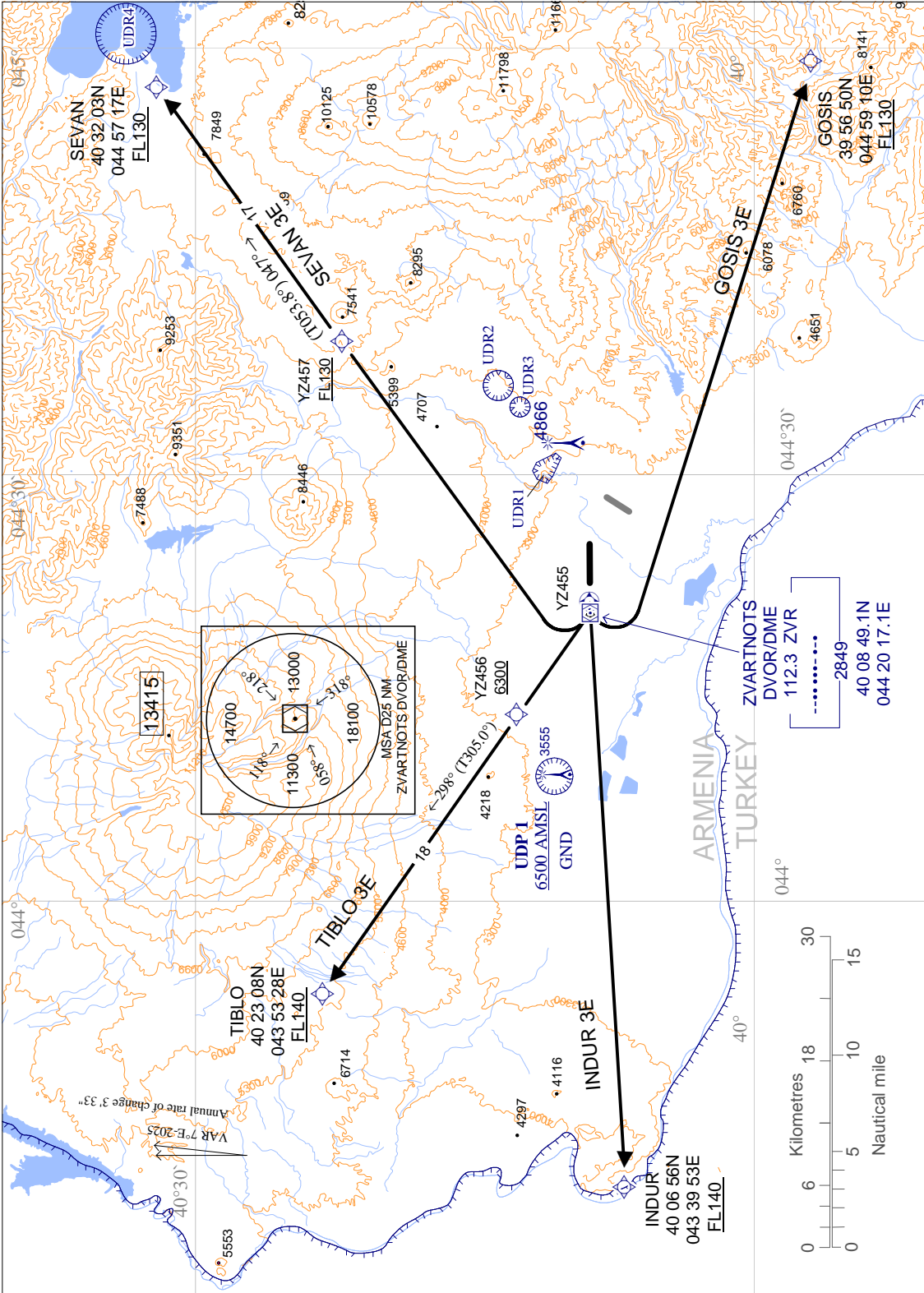
AD ELEV 2838  
THR RWY 26 ELEV 2838

TRANSITION ALTITUDE 11500

ATIS 119.5  
YEREVAN / GROUND 119.0  
YEREVAN / TOWER 128.0  
YEREVAN / APP 126.0

**YEREVAN / Zvartnots  
RNAV1 (GNSS) RWY 26**

TIBLO 3E, SEVAN 3E  
GOSIS 3E, INDUR 3E



**WARNING:**

- ALTITUDES & ELEVATIONS ARE IN FEET
- TRACKS ARE MAGNETIC
- TRACKS IN BRACKETS ARE TRUE
- DISTANCES ARE IN NM

- UDP 1 - 401044N 0440848E  
RADIUS 1 NM
- UDR 1 - 401153N 0443012E-401141N 0443047E  
-401039N 0443127E-401022N 0443107E  
-401049N 0442949E-401107N 0442919E  
-401139N 0442936E-401153N 0443012E  
6000 FT AMSL / GND
- UDR 2 - 401344N 0443612E  
RADIUS 0.8 NM 5500FT AMSL/GND
- UDR 3 - 401234N 0443442E  
RADIUS 0.5 NM 6000FT AMSL/GND
- UDR 4 - 403344N 0450102E  
RADIUS 1.6 NM 9700FT AMSL/GND

**NOTES:**

- Contact Yerevan Approach immediately after take-off.
- Standard Instrument Departure Routes are also minimum noise routings.
- Strict adherence within the limits of performance criteria is mandatory.
- If unable to comply with SID, climb gradients or non-standard clearance issued, advise ATC prior to take-off and request alternative clearance.
- During initial turns Max IAS 210 bank angle 20°

